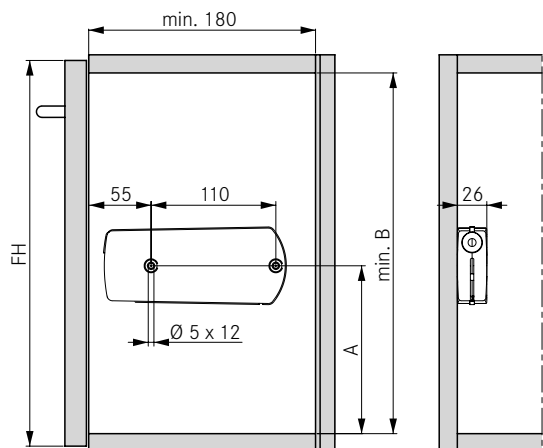


ASSEMBLY AND INSTALLATION INSTRUCTIONS

All dimensions in millimetres

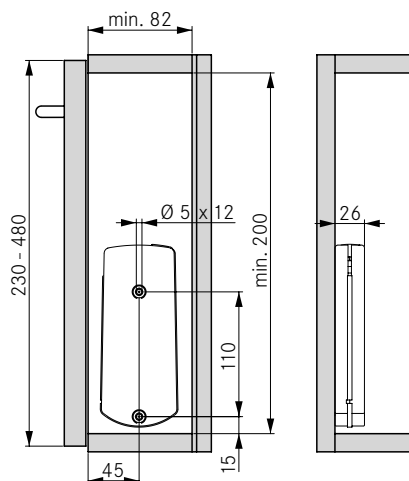
Drilling position and space required

V1

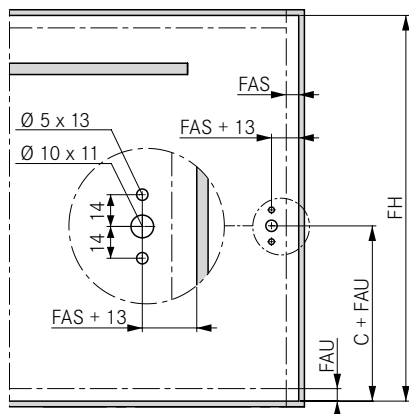


FH	A	B
200-270	135	173
270-480	148	186

V2



Front mounting for wooden flaps



FH	C (V1)	C (V2)
200-270	123	-
270-480	144	-
230-480	-	123

Minimum reveal and door protrusion depend on the hinge fitted.  
You can find suitable hinges in the hinge systems product catalogue.

Calculation of flap weight

Flap width x flap height x flap thickness x density <sup>1</sup> + weight of handle <sup>2</sup> = weight of flap

<sup>1</sup> Densities: MDF board 0.85 kg/dm<sup>3</sup>, chipboard 0.65 kg/dm<sup>3</sup>, spruce/pine 0.45 kg/dm<sup>3</sup>

<sup>2</sup> For bar handles, allow 0.1 kg per 100 mm of handle length. We recommend a trial fitting

LEGEND

FAS Front overlay, side  
FAU Front overlay, bottom  
FH Front height

1

2

3

4

5

6

7

8